

# TILE & STONE

# CLASSIC BRICK

ceramic



120 Manor



150 Cottage



170 Farmhouse



790 Warehouse Blend



<b>Style Number</b>	<b>CS93Z</b>
<b>Construction</b>	ceramic
<b>Tile Type</b>	wall
<b>Tile Size</b>	2.25" x 7.62"
<b>Technical</b>	
<b>Wear Rating Group</b>	N/A
<b>Break Strength</b>	>250
<b>Water Absorption %</b>	3.76
<b>DCOF</b>	N/A
<b>Shade Variation</b>	V2, V3*
<b>Installation Area</b>	Walls

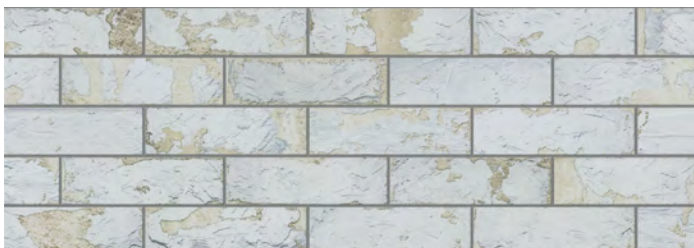
\* 790 Warehouse Blend - V3

A DCOF value of >0.42 is the new standard for tiles specified for commercial application in standard A137.1-2012, Section 9.6. It replaces the SCOF value of >0.60 referenced in ASTM C1028. For more information on the correlation between the two values and about the DCOF AcuTest visit the Tile Council of North America's website: [www.tcnatile.com](http://www.tcnatile.com)

**MANUFACTURER'S WARNING:**

- Tiles with DCOF AcuTest values less than 0.42 are not recommended for use in areas with wet or slippery conditions. If such tiles are used as a walking surface where water, ice, oil, grease and/or other substances are present, such a condition could cause a reduction in foot traction and become unexpectedly slippery resulting in a fall and personal injury. See ANSI standard A137.1 section 6.2.2.1.10, available at [www.tcnatile.com/sections6.2.2.1.10.html](http://www.tcnatile.com/sections6.2.2.1.10.html).
- Water, oil, grease, etc. create slippery conditions. Floor applications with exposure to these conditions require extra caution in product selection. Not for use on ramps.
- Since there is a shade variation on all natural products, the tile and trim supplied for your particular installation may not match these samples. Final selection should be made from actual tiles and trim and not from tile and trim samples or color reproductions. Manufactured in accordance with ANSI A137.1 standards.

## Colors



120 Manor



150 Cottage



170 Farmhouse



790 Warehouse Blend\*